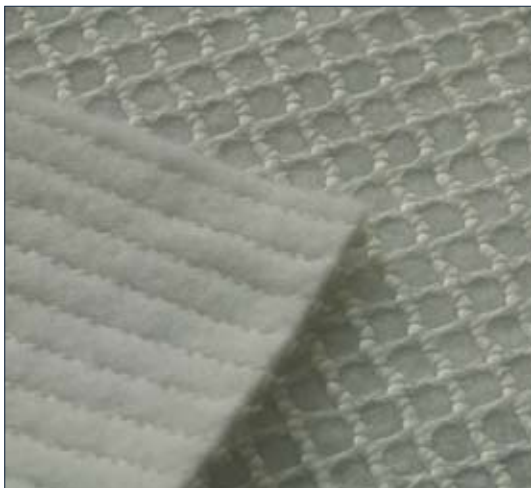


MACRIT® GTV

geotecnico



 ALPEADRIA
T E X T I L



Geotessile tessuto a maglia aperta, monoassiale o biassiale, accoppiato in fase di produzione ad un geotessile non tessuto di polipropilene.

Filati standard: PES, PP.

Funzione: rinforzo e separazione, rinforzo e anticontaminante, rinforzo e filtrazione.

Applicazione: terre rinforzate, rilevati stradali e ferroviari, lavori idraulici e marittimi.

Knitted geotextile with open mesh, uniaxial or biaxial, combined during production with a non woven of polypropylene.

Standard yarns: PES, PP.

Purpose: reinforcement and separation, reinforcement and anti-contaminating, reinforcement and filtration.

Application: reinforced grounds, railway and highway subgrades, hydraulic and marine works.

APPLICAZIONI



terre rinforzate / reinforced grounds



rinforzo e separazione / reinforcement and separation



scudatura rilevato / railway topping layer



rinforzo e filtrazione / reinforcement and filtration

Alpe Adria Textil Srl reserves for itself the right to modify, without any notice, technical and aesthetic characteristics of its products based on continuous technological evolution.