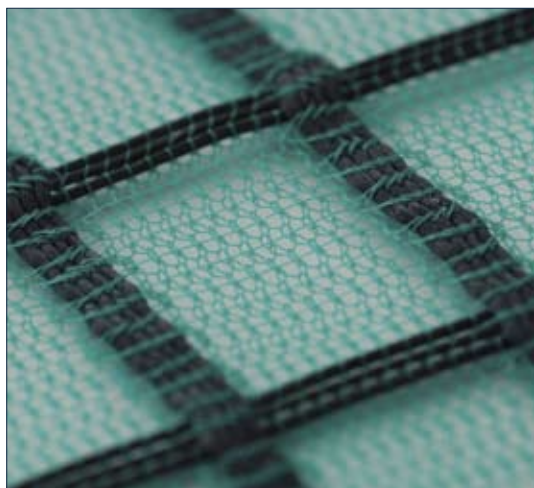


ARTER<sup>®</sup> GTM

geotecnico



 ALPEADRIA  
T E X T I L



Geogriglia tessile, monoassiale a struttura composta di filati in PES e HDPE, con maglia secondaria per il contenimento delle terre fini ed atta al rinverdimento.

**Funzione:** rinforzo, antierosione.

**Applicazione:** terre rinforzate, consolidamento scarpate.

*Uniaxial knitted geogrid, with composite structure made of yarns in PES e HDPE, with secondary mesh for thin grounds containment and suitable to grow green.*

**Purpose:** reinforcement, anti-erosion.

**Application:** reinforced grounds, slopes consolidation.

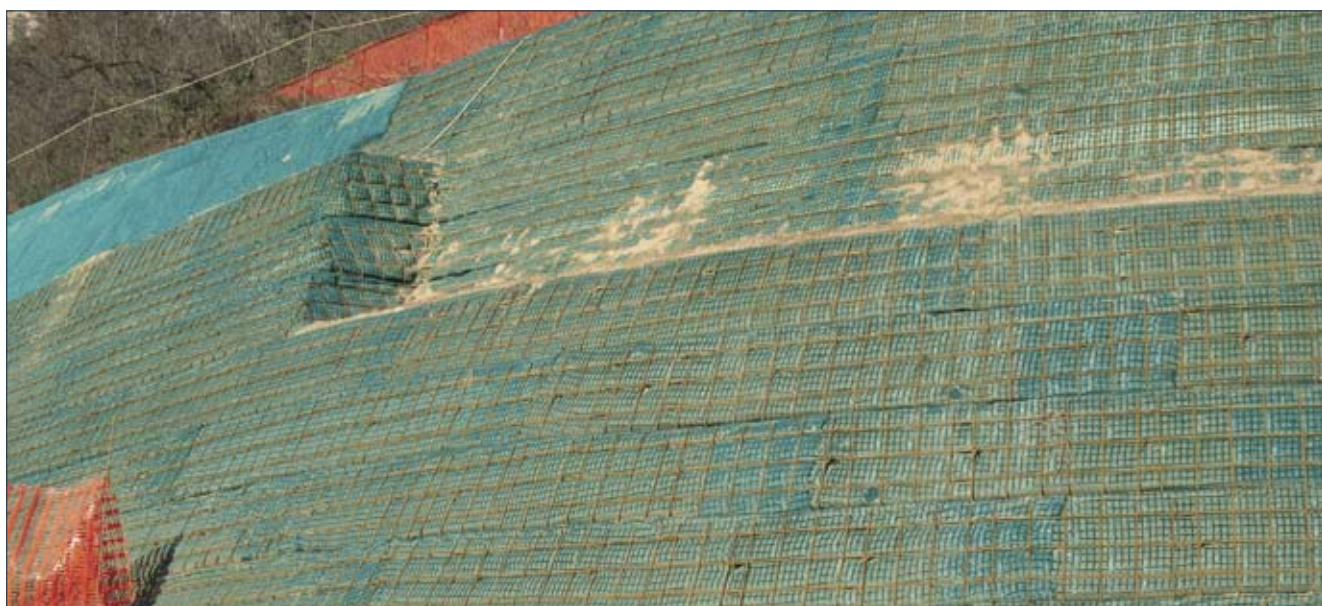
## APPLICAZIONI



spalla di ponte / abutment



dettaglio / detail



terra rinforzata / reinforced grounds

Alpe Adria Textil Srl reserves for itself the right to modify, without any notice, technical and aesthetic characteristics of its products based on continuous technological evolution.